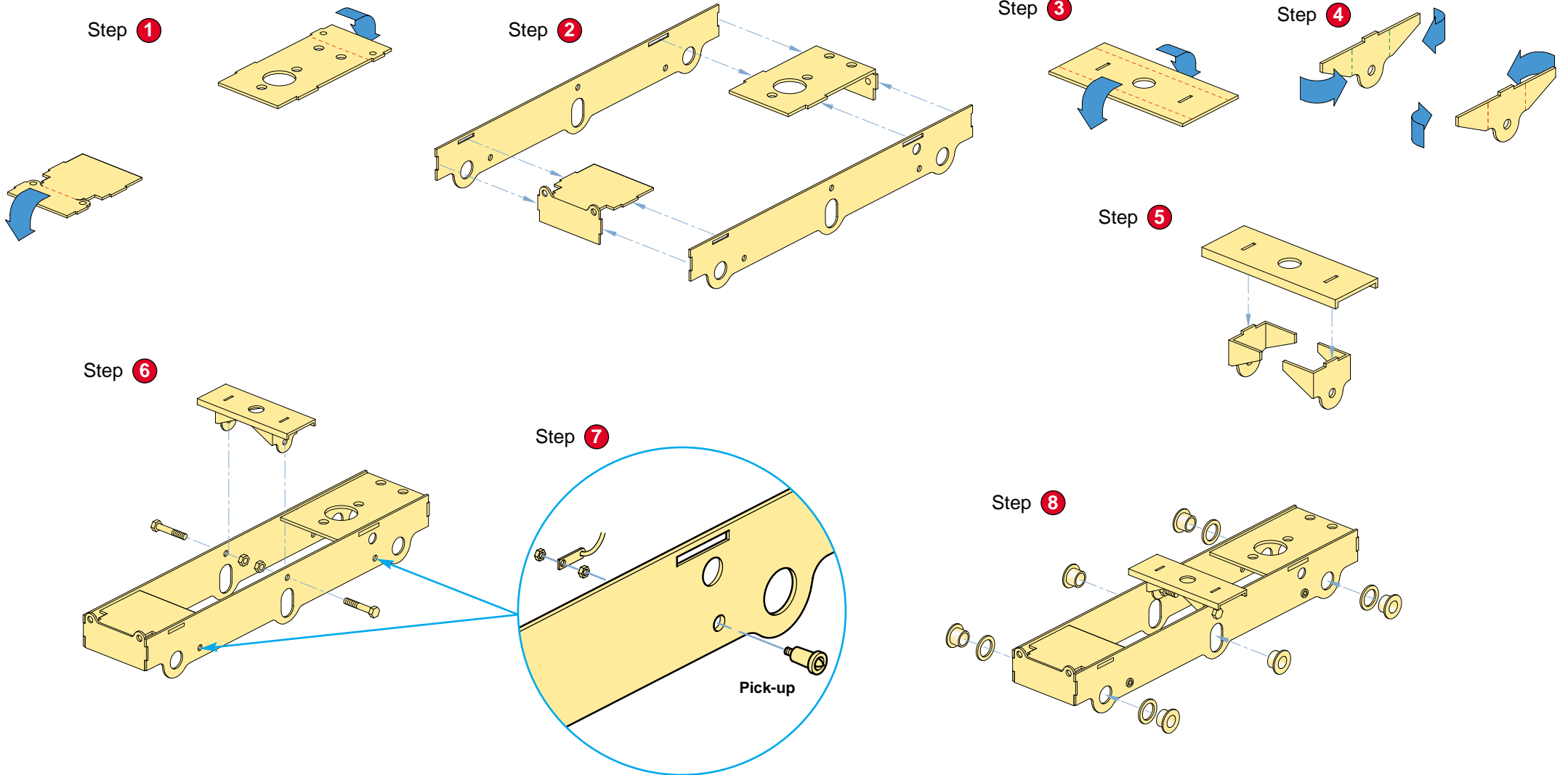
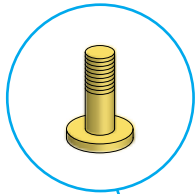


# JUST LIKE THE REAL THING

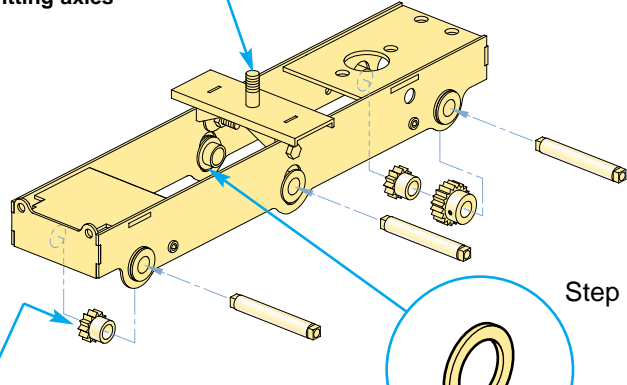
## Peak - Motor Bogie



Step 9

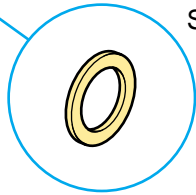


Solder bolt in position before fitting axles



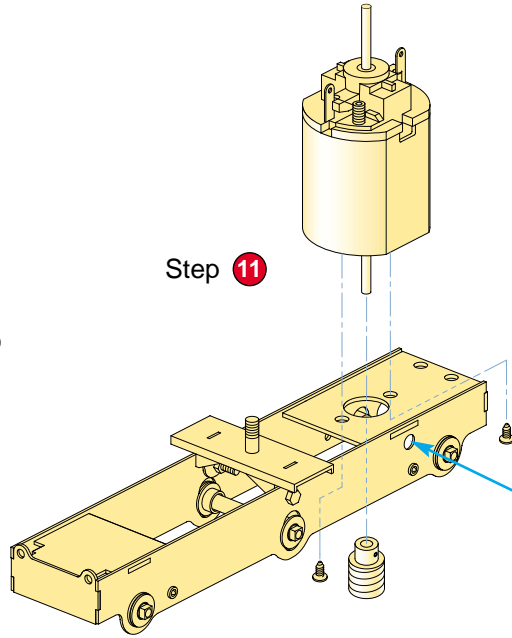
NOTE: It maybe necessary to shave a small amount off the sprocket end of the plastic collars to ensure free running of the axles.

Step 10

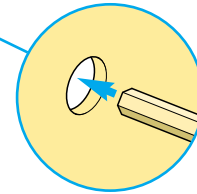


Solder washer on to middle bearings from inside bogie

Step 11

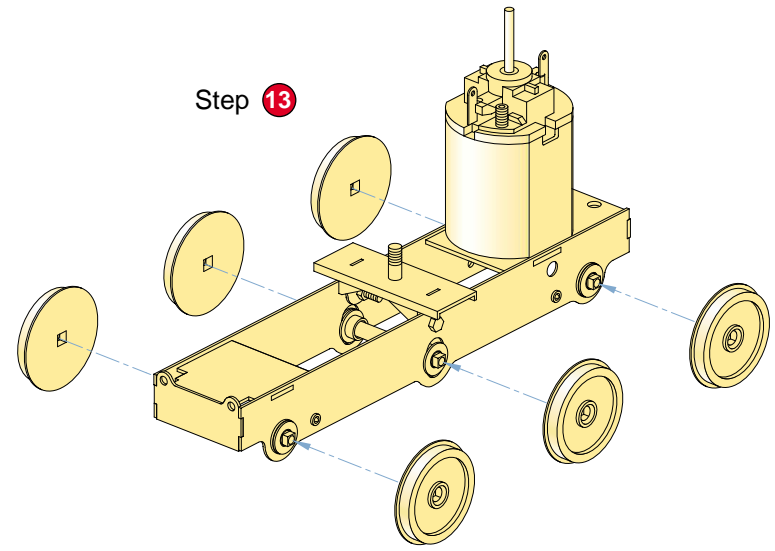


Step 12



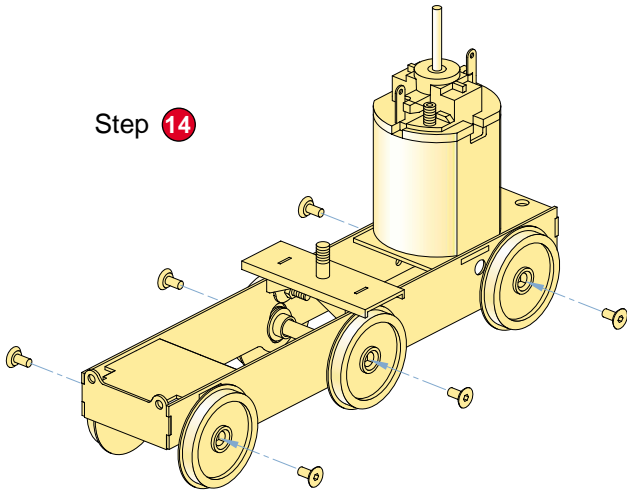
Secure worm gear by tightening grub screw through side frame

Step 13

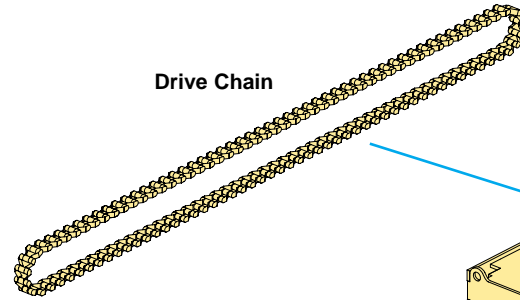


Wheels - Slater's ref. B7845 (3' 9" dia)

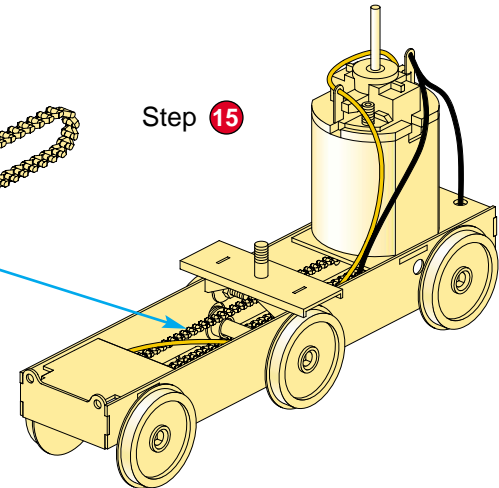
Step 14



Drive Chain



Step 15



Connect four wires from motor to pick-ups